

LED Panel Light:

LED panel light is an efficient alternative to fluorescent lighting that enhances any commercial or industrial space. which can be used in classrooms, offices and long, linear conference rooms, but is versatile enough for applications such as supermarket and sorting areas.

Features:

- Using high brightness LEDs
- Over 50% energy saving
- Good thermal conductivity and heat dissipation
- PF > 0.99
- CRI: 82
- Optical PC cover with 93% transmission
- Modern design, and easy installation
- Non-Corrosive PC cover
- Stainless Steel spec grade clips
- Life time over to 50,000 hours
- Multiple mounting options

Construction:

- PC covers + Aluminum housing body
- Universal voltage 100-277V



LED Panel Light

ITEM	SPECIFICATION	DETAILS	DETAILS	DETAILS	DETAILS	DETAILS	DETAILS
GENERAL PERFORMANCE	Lumens Delivered (lm)	3600LM	4000LM	4500LM	5000LM	5500LM	4000LM
	Efficacy (lm/W)	100LM/W	100LM/W	100LM/W	100LM/W	100LM/W	100LM/W
	CCT	3000K, 4000K, 4500K, 5000K, 6000K					
	CRI	82					
	Lumen Maintenance	50,000 Hrs					
ELECTRICAL	Power Consumption	36W	40W	45W	50W	55W	40W
	Input Voltage (V)	120-277V					
	Power Factor	>.90 @ 120VAC; >.90 @ 277VAC					
	Operating Cycle	50/60Hz					
PHYSICAL	Dimensions(mm)	603*603	603*603	603*603	603*603	603*603	303*1216
	Weight	4.25kg	4.25kg	4.25kg	4.25kg	4.25kg	4.95kg
	Chips	Epistar 2835					
	Housing	6063 Aluminum, silver or white coat are available					
	Lens	Frosted					
	Mounting	Surface Mounts or Suspended					
	Operating Temperature	Operating Temperature -20°C to 40°C (-4°F to 104°F)					
CERTIFICATION	Certification	UL and DLC; CE; RoHS (LM79, LM80)					
DLC Product Code	4000K	PA77BZ5S	PKAHV72E	PWJ9WP	P5T8SVVD	P83RQFEK	PXS97CAD
	4500K	PSMZQGF	PQFRZ55	PTSPAJZ	PV56ANXZ	PCBPT6M1	PQSKMCE6
	5000K	PKMNCYU	PG1TFXGP	P6YS3DN	P2J9T3H7	P1BD4N37	P1TBQR3S

Direct Line: 1-289-200-057, Fax: 1-888-802-9368

Email: sales@electrostar.ca

Website: www.electrostar.ca

LED Panel Light

SPECIFICATIONS:		SPZPL1455	SPZPL2455	SPZPL2472
ITEM	SPECIFICATION	DETAILS	DETAILS	DETAILS
GENERAL PERFORMANCE	Lumens Delivered (lm)	5500LM	5500LM	7200
	Efficacy (lm/W)	100LM/W	100LM/W	100LM/W
	CCT	3000K, 4000K, 4500K, 5000K, 6000K		
	CRI	82		
	Lumen Maintenance	50,000 Hrs		
ELECTRICAL	Power Consumption	55W	55W	72W
	Input Voltage (V)	120-277V		
	Power Factor	>.90 @ 120VAC; >.90 @ 277VAC		
	Operating Cycle	50/60Hz		
PHYSICAL	Dimensions(mm)	303*1216	603*1216	603*1216
	Weight	4.95kg	9.75kg	9.75kg
	Chips	Epistar 2835		
	Housing	6063 Aluminum, silver or white coat are available		
	Lens	Frosted		
	Mounting	Surface Mounts or Suspended		
	Operating Temperature	Operating Temperature -20°C to 40°C (-4°F to 104°F)		
CERTIFICATION	Certification	UL and DLC; CE; RoHS (LM79, LM80)		
DLC Product Code	4000K	P4TTRK9B	PUDF4G49	PXW6XFVR
	4500K	PG5ZQR9M	PUBP6AQ4	PBUMMV4J
	5000K	PKRTCDGY	P9SS3BBG	PQMXCEBY

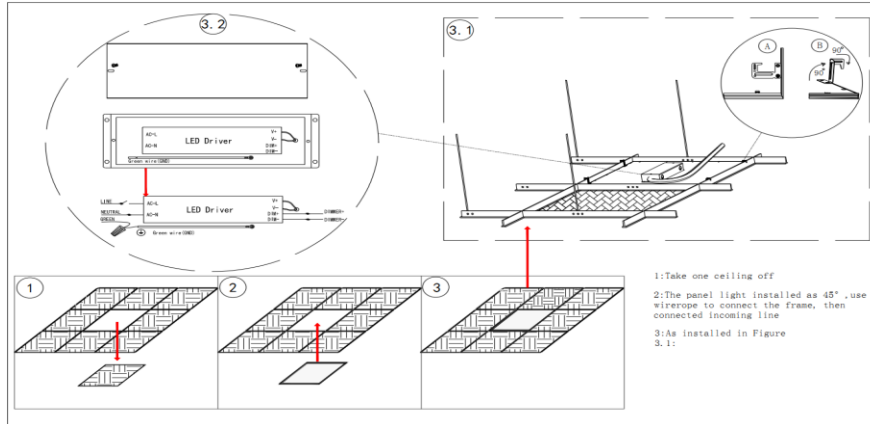
Direct Line: 1-289-200-057, Fax: 1-888-802-9368

Email: sales@electrostar.ca

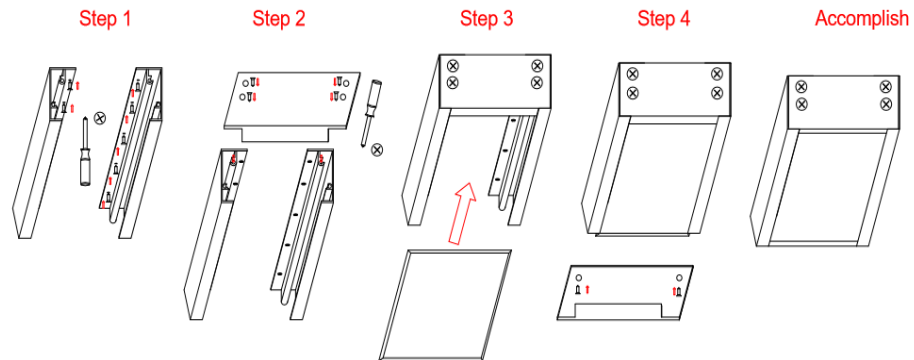
Website: www.electrostar.ca

Installation Options:

Recessed



Surface mount



Hanging on wall

